



INTER COMPANY SOLUTION



Global Data Distribution

While global organizations continue to grow and transform their processes to adapt to market needs it is essential that relevant common data promptly reaches all entities within their organization to ensure stability. Another critical element of this global scope is these organizations' ability to comply with local business rules and requirements.

Intercompany Trade

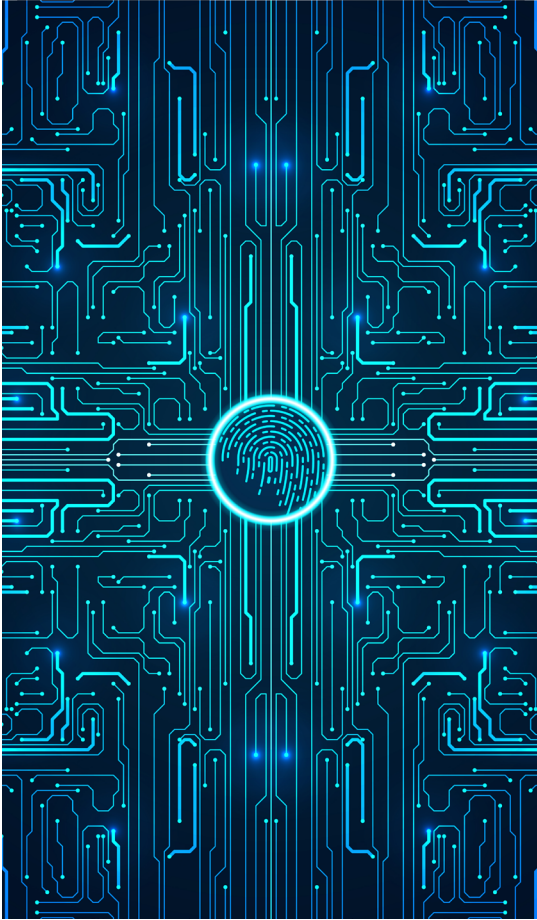
Companies operating within global organizations engage in a high number of internal transactions. They can benefit from automated, efficient, and less time-consuming processes allowing them to focus on what matter most: their customers.

Financial Consolidation

A prevailing demand for global organizations is to have real-time global financial reporting and maintaining transparency in local operations at all times. These two elements are fundamental to support strategic decisions and enhance decision-making.

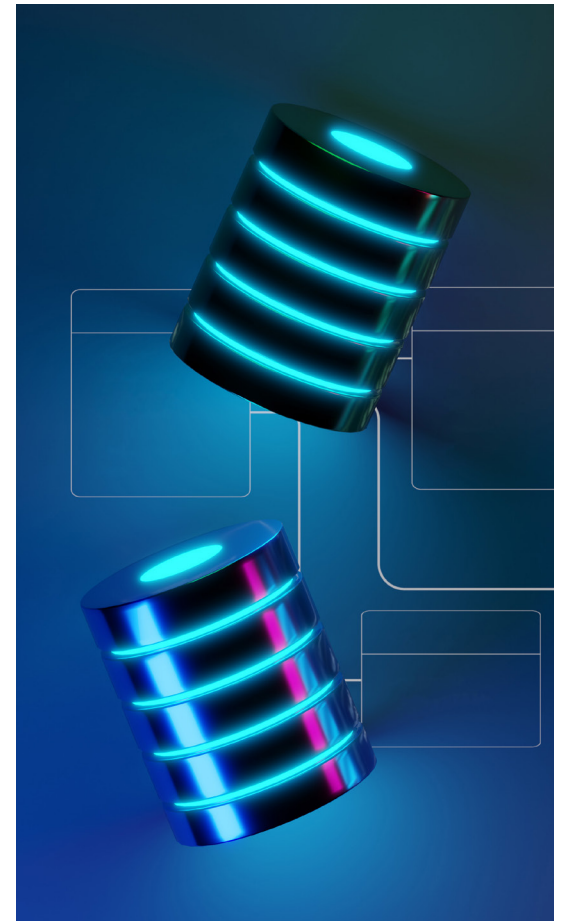
Control & Collaboration

Given the necessity for companies to effectively manage and control global data distribution and global operations with relevant and accurate information available at any moment, making intercompany processes as transparent and reliable as possible is crucial to ensure the durability of businesses.



FUNCTIONALITIES

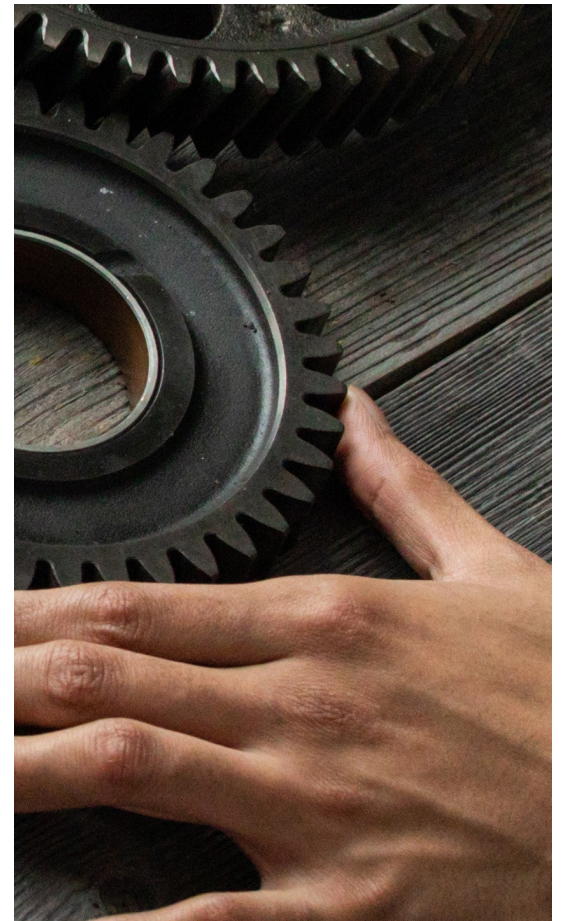
- Intercompany Solutions (ICS) Administration
- Central Master Data Management
- Intercompany Trade
- Financial Consolidation





ICS ADMINISTRATION

- Landscape Definition
- Master Data Replication Settings
- IC Trade Replication Settings
- Consolidation Settings
- Comprehensive Logging and Status Dashboard



CENTRAL MASTER DATA MANAGEMENT



Replication Settings

- Replication Templates (Assigned to each Company)
- Replication to Company Groups
- Key Mapping by Name (Central to Local)
- Business-Driven Advanced Rules at Field Level

Comprehensive Logging

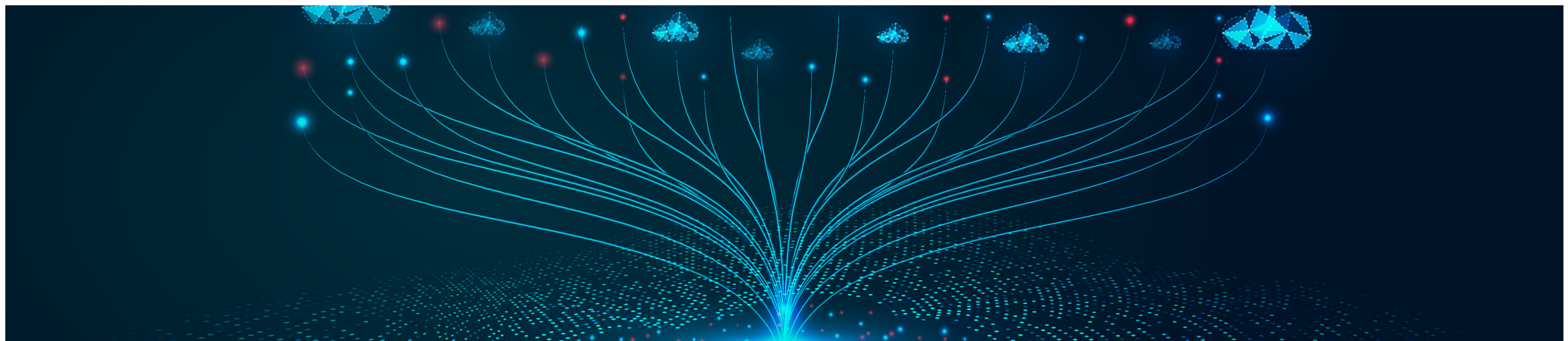
- Status Dashboard (Central Database)
- Context Logging (Each Database)
- Retry Mechanism (on Error)

Global Data Authorization

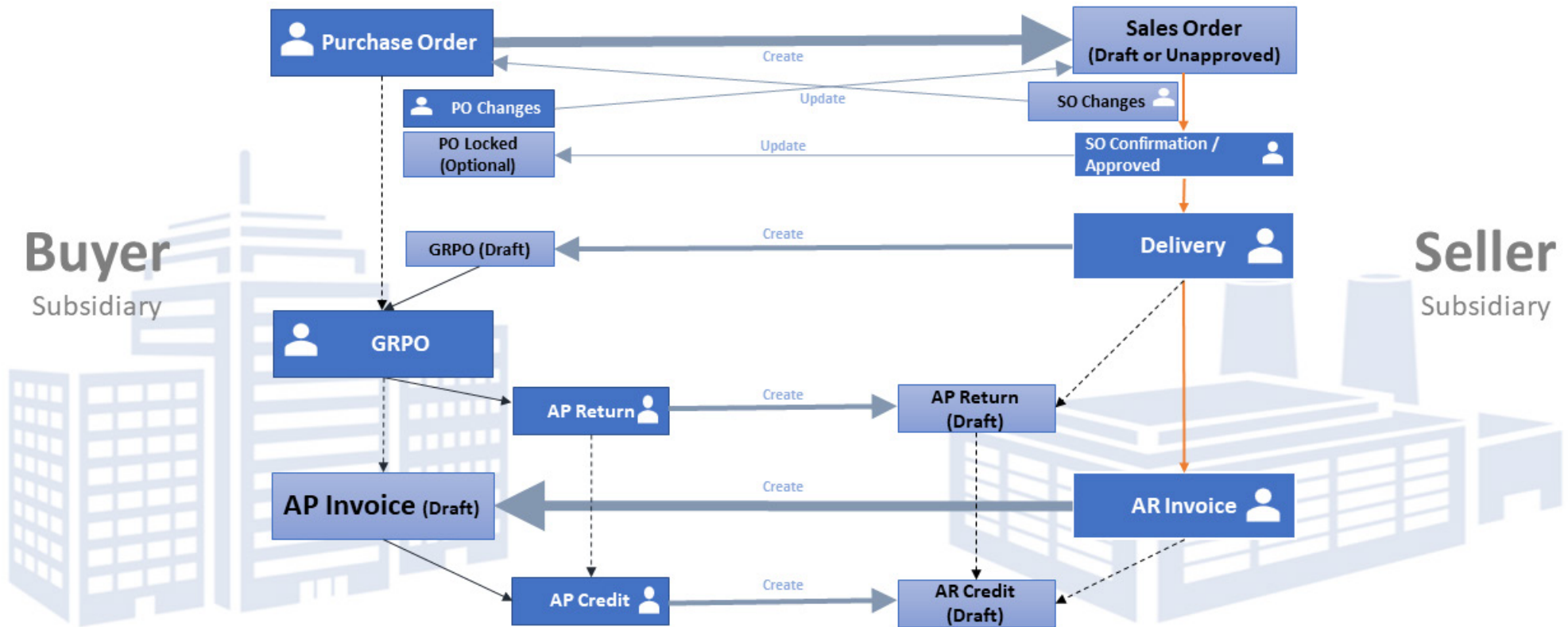
Replication Objects

- Items
- Business Partners
- Chart of Accounts
- Cost Centers (Dimensions)
- Distribution Rules
- Projects
- Payment Terms/Discount Groups
- Posting Period

- Currencies
- Exchange Rates
- Users
- User Groups



INTERCOMPANY TRADE



5

Replication Settings

- Replication Templates (Assigned to Each Company)
- Business-Driven Advanced Rules at the Field Level

Intercompany Workflow

- Purchase Order to Sales Order
- Delivery to Goods Receipt PO
- A/R Invoice to A/P Invoice
- A/R Credit Memo to A/P Credit Memo
- Consolidation Operation Replication

Comprehensive Logging

- Status Dashboard (Central Database)
- Context Logging (Each Database)
- Retry Mechanism (on Error)



FINANCIAL CONSOLIDATION

Replication Settings

- Business-Driven Advanced Rules at Field Level
- Organizational Chart
- Multi-Level Consolidation
- Account Mapping

Consolidation Operations

- Journal Entry Replication (Local to Consolidation)
- Automated IC Operations Elimination
- Manual Adjustments
- Consolidation Operation Replication

Consolidation Reporting

- Consolidated P&L
- Consolidated Trial Balance
- Elimination Report



ROADMAP



FINANCIAL PLANNING

Planning Settings

- Organizational Chart
- Multi-level Planning
- Account Mapping
- P&L Structure and Formula Definition

Planning Operations

- Budget Upload (Excel, Existing Budget, Actuals)
- Budget Follow-Up and Export
- Budget Versioning
- Forecasted Budget
- Historical Data Upload for Comparison
- Statistical Adjustments

Planning Reporting

- YTD and MTD Comparison (Planned vs Actuals)
- P&L Comparison
- Forecasted P&L
- Multiple Level Analysis: Account, Cost Center (Multiple Dimensions), Project, Customer, Item

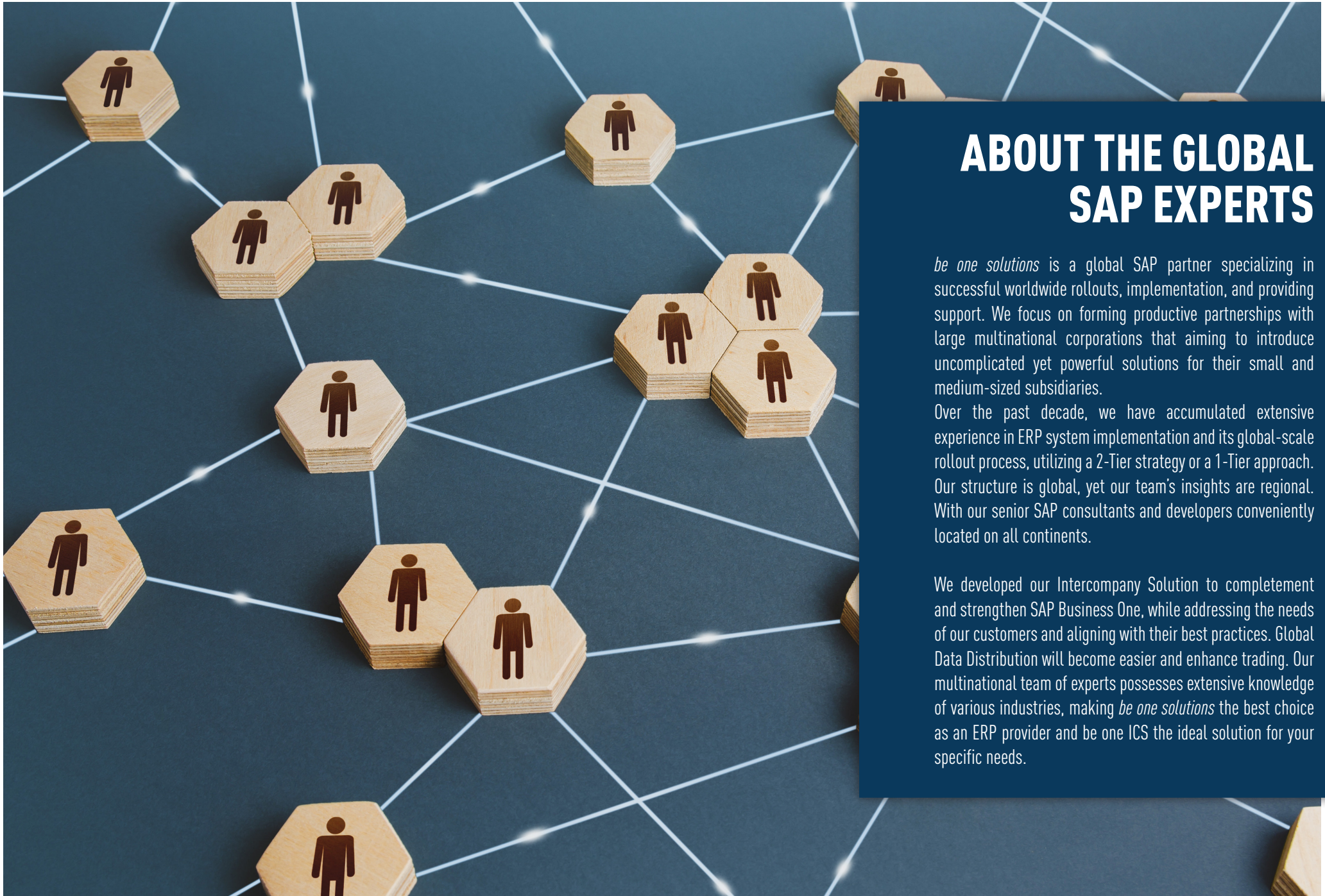
FINANCIAL ANALYTICS

CENTRALIZED PAYMENT APPROVAL

CENTRAL MASTER DATA MANAGEMENT

Approval Workflow

- Multi-level Approval
- Authorizations Group-Based



ABOUT THE GLOBAL SAP EXPERTS

be one solutions is a global SAP partner specializing in successful worldwide rollouts, implementation, and providing support. We focus on forming productive partnerships with large multinational corporations that aiming to introduce uncomplicated yet powerful solutions for their small and medium-sized subsidiaries.

Over the past decade, we have accumulated extensive experience in ERP system implementation and its global-scale rollout process, utilizing a 2-Tier strategy or a 1-Tier approach. Our structure is global, yet our team's insights are regional. With our senior SAP consultants and developers conveniently located on all continents.

We developed our Intercompany Solution to complement and strengthen SAP Business One, while addressing the needs of our customers and aligning with their best practices. Global Data Distribution will become easier and enhance trading. Our multinational team of experts possesses extensive knowledge of various industries, making *be one solutions* the best choice as an ERP provider and *be one ICS* the ideal solution for your specific needs.



info@beonesolutions.com
www.beonesolutions.com



© be one solutions