



# INTER COMPANY SOLUTION



## Global Data Distribution

While global organizations continue growing and transforming their processes to adapt to market needs, relevant common data needs to reach all entities within their organization promptly to ensure stability. Another critical element to this global extent is these organizations' capacity to comply with local business rules and requirements.

## Intercompany Trade

Companies operating within global organizations perform a high number of internal transactions. They can benefit from automated, efficient, and low-time-consuming processes to focus on what matter most, their customers.

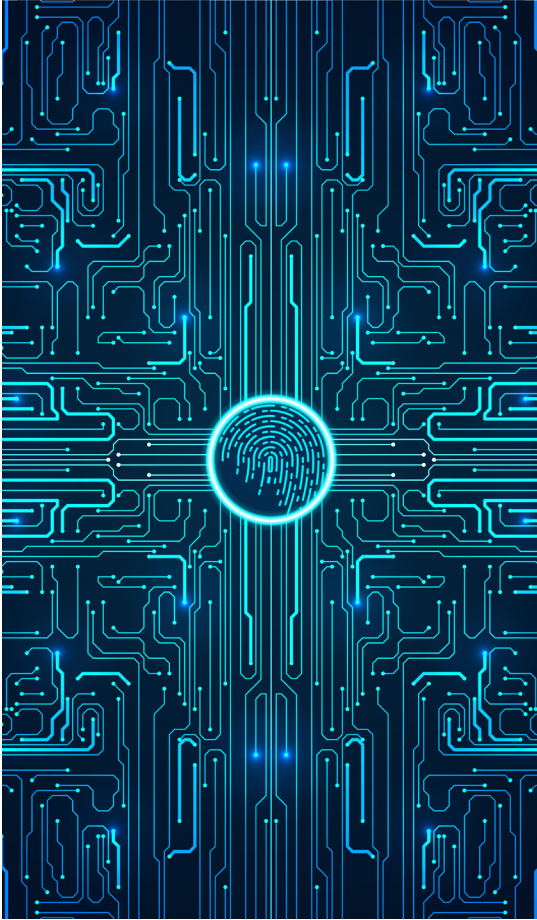
## Financial Consolidation

A prevailing demand for global organizations is to have global financial reporting in real-time and to maintain transparency on local operations at all times. These two elements are fundamental to support strategical decisions and better decision-making.

## Control & Collaboration

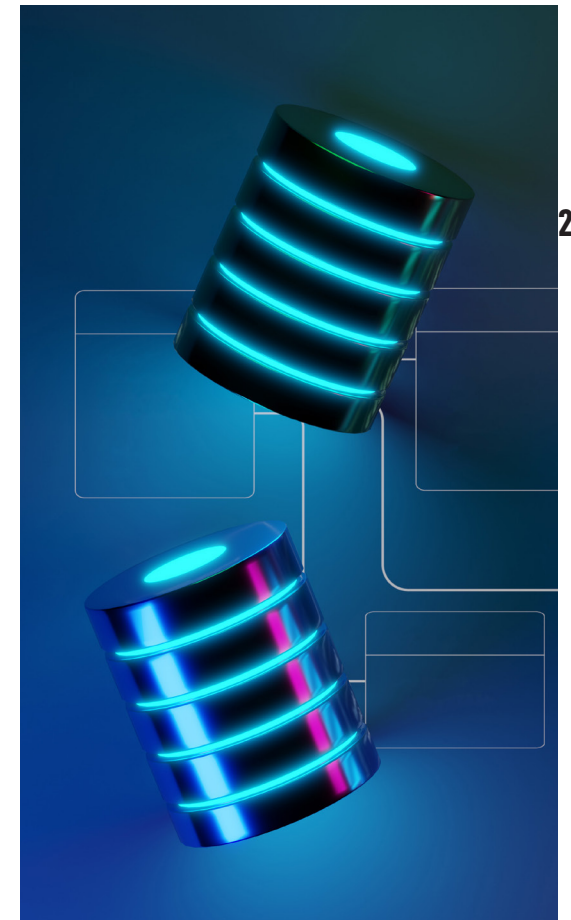
Given the necessity for companies to smoothly manage and control global data distribution and global operations with relevant and accurate information at any moment, making intercompany processes as transparent and reliable as possible is crucial to ensure businesses' durability.





# FUNCTIONNALITIES

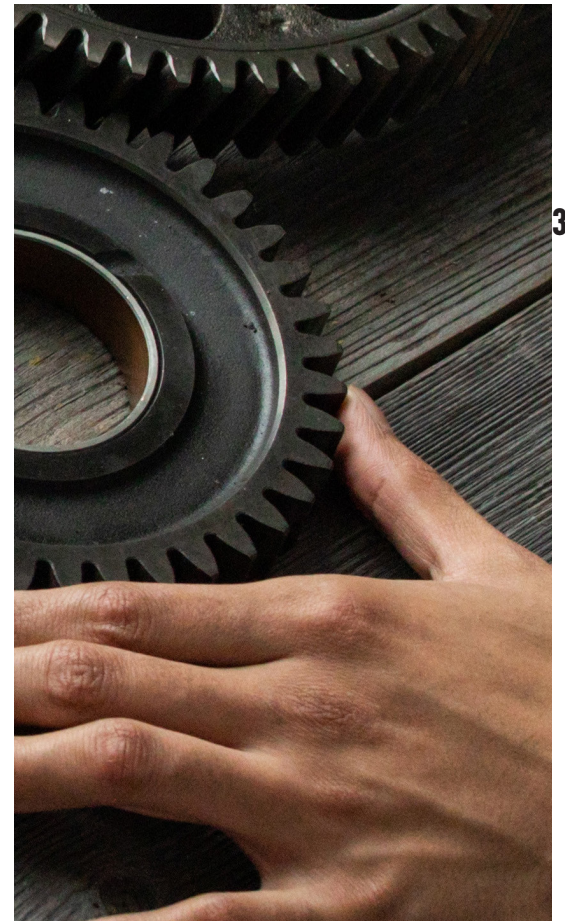
- ICS Administration
- Central Master Data Management
- Intercompany Trade
- Financial Consolidation





# ICS ADMINISTRATION

- Landscape Definition
- Master Data Replication Settings
- IC Trade Replication Settings
- Consolidation Settings
- Comprehensive Logging and Status Dashboard



# CENTRAL MASTER DATA MANAGEMENT



## Replication Settings

- Replication Templates (Assigned to each Company)
- Replication-To Company Groups
- Key Mapping by Name (Central to Local)
- Business driven advanced rules at field level

## Comprehensive Logging

- Status Dashboard (Central Database)
- Context Logging (Each Database)
- Retry Mechanism (on Error)

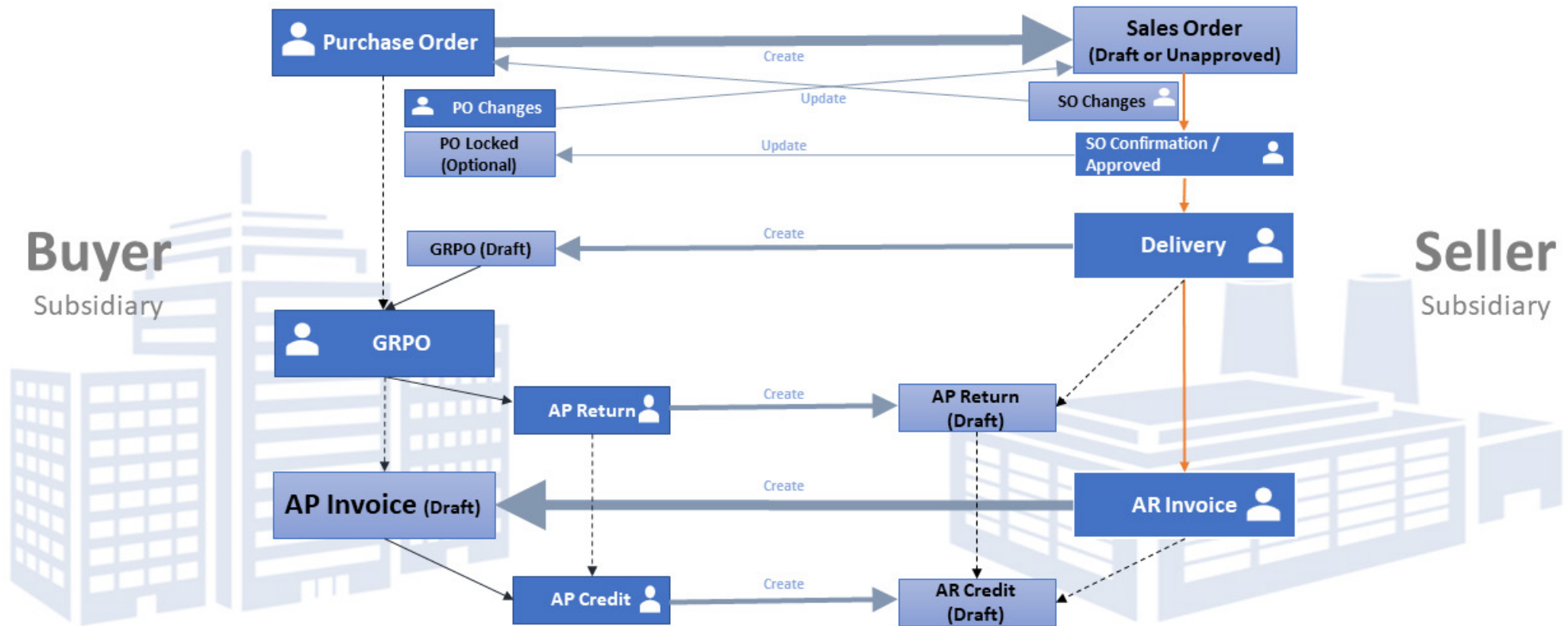
## Global data Authorization

## Replication Objects

- Items
- Business Partners
- Chart Of Accounts
- Cost Centers (Dimensions)
- Distribution Rules
- Projects
- Payment Terms/Discount Groups
- Posting Period
- Currencies
- Exchange Rates
- Users
- User Groups



# INTERCOMPANY TRADE



5

## Replication Settings

- Replication Templates (Assigned to each Company)
- Business driven advanced rules at field level

## Intercompany Workflow

- Purchase Order to Sales Order
- Delivery to Goods Receipt PO
- A/R Invoice to A/P Invoice
- A/R Credit Memo to A/P Credit Memo
- Consolidation Operation Replication

## Comprehensive Logging

- Status Dashboard (Central Database)
- Context Logging (Each Database)
- Retry Mechanism (on Error)



# FINANCIAL CONSOLIDATION

## Replication Settings

- Business driven advanced rules at field level
- Organizational Chart
- Multi-level Consolidation
- Account Mapping

## Consolidation Operations

- Journal Entry Replication (Local to Consolidation)
- Automated IC Operations Elimination
- Manual Adjustments
- Consolidation Operation Replication

## Consolidation Reporting

- Consolidated P&L
- Consolidated Trial Balance
- Elimination Report



# ROADMAP



## FINANCIAL PLANNING

### Planning Settings

- Organizational Chart
- Multi-level Planning
- Account Mapping
- P&L Structure and Formula definition

### Planning Operations

- Budget Upload (Excel, existing budget, Actuals)
- Budget Follow Up and Export
- Budget Versioning
- Forecasted Budget
- Historical Data Upload for Comparison
- Statistical Adjustments

## Planning Reporting

- YTD and MTD Comparison (Planned vs Actuals)
- P&L Comparison
- Forecasted P&L
- Multiple Level Analysis: Account, Cost Center (multiple dimension), Project, Customer, Item

## FINANCIAL ANALYTICS

## CENTRALIZED PAYMENT APPROVAL

## CENTRAL MASTER DATA MANAGEMENT

### Approval Workflow

- Multi-level Approval
- Authorizations Group Based



# ABOUT THE GLOBAL SAP EXPERTS

*be one solutions* is a global SAP partner specializing in successful worldwide rollouts, implementation, and support. We focus on fruitful partnerships with large, multinational corporations that aim to deploy simple, yet powerful solutions for their small & medium-sized subsidiaries. Over the past decade, we have gathered a vast experience in ERP system implementation and its rollout process on a global scale with a 2-Tier strategy or a 1-Tier one.

8

Our structure is global, yet our team's insights are regional. Indeed, our senior SAP consultants and developers are conveniently located on all continents.

We developed our Intercompany Solution to complete and strengthen SAP Business One, while answering the needs of our customers and following their best practices. Global Data Distribution will be easier and increase trading. Our multinational team of experts comes with extensive knowledge of various industries, which makes *be one solutions* the best choice as an ERP provider and *be one ICS* the ideal solution for your specific needs.



info@beonesolutions.com  
www.beonesolutions.com



© be one solutions